

## Integration-Architecture-Designer PDF Dumps 2024 Exam Questions with Practice Test [Q22-Q44]



## Integration-Architecture-Designer PDF Dumps 2024 Exam Questions with Practice Test [Q22-Q44]

### **Integration-Architecture-Designer PDF Dumps 2024 Exam Questions with Practice Test Dumps for Free Integration-Architecture-Designer Practice Exam Questions**

Salesforce Integration-Architecture-Designer certification is ideal for professionals who work in the field of Salesforce integration architecture. Salesforce Certified Integration Architecture Designer certification is highly recommended for those who have a thorough understanding of Salesforce's data and security models, as well as experience with various integration tools and technologies. It is also beneficial for those who have experience in designing and implementing complex integration solutions using Salesforce.

Salesforce Integration-Architecture-Designer certification is highly valued in the industry as it demonstrates a professional's ability to design and implement complex integration solutions in a Salesforce environment. Certified professionals are sought after by organizations that rely on Salesforce as their primary customer relationship management (CRM) tool. They are responsible for ensuring that the Salesforce platform is integrated seamlessly with other systems, enabling organizations to streamline their operations and increase efficiency.

## NEW QUESTION 22

Universal Containers (UC) is currently managing a custom monolithic web service that runs on an on-premise server.

This monolithic web service is responsible for Point-to-Point (P2P) integrations between:

1. Salesforce and a legacy billing application
2. Salesforce and a cloud-based Enterprise Resource Planning application
3. Salesforce and a data lake.

UC has found that the tight interdependencies between systems is causing integrations to fail.

What should an architect recommend to decouple the systems and improve performance of the integrations?

- \* Re-write and optimize the current web service to be more efficient.
- \* Leverage modular design by breaking up the web service into smaller pieces for a microservice architecture.
- \* Use the Salesforce Bulk API when integrating back into Salesforce.
- \* Move the custom monolithic web service from on-premise to a cloud provider.

## NEW QUESTION 23

Universal Containers has used Outbound Messaging to integrate with their billing system. Their billing system has frequent outages that don't last more than a couple of hours.

Which two aspects of Outbound Messaging might the customer experience issues with as a result of these outages?

Choose 2 answers

- \* Out-of-order delivery.
- \* Duplicate messages
- \* Orphaned Requests
- \* Exceeding Governor Limits.

## NEW QUESTION 24

UC leverages customer MDM as a source of truth. The requirement is to dedupe and store any account or contact created in MDM before the same is created in Salesforce. This ensures data is clean and not duplicated in Salesforce. During peak season, users experience a `Concurrent Request Limit Exceeded` error.

What is the recommended solution?

- \* Invoke a continuation callout to MDM from a VF Page controller.
- \* Invoke a continuation callout to MDM from a before insert trigger.
- \* Invoke a continuation callout to MDM from a VF Page JavaScript.
- \* Invoke a continuation callout to MDM from a VF Page @future call.

## NEW QUESTION 25

Universal Containers has a requirement for all accounts that do NOT qualify for a business extension (Custom field on the account record) for the next month to send a meeting invite to their contacts from the marketing automation system to discuss the next steps.

It is estimated there will be approximately 1 Million contacts per month.

What is the recommended solution?

- \* Use Batch Apex.
- \* Use Time-based workflow rule.
- \* Use Process builder.
- \* Use Trigger.

### NEW QUESTION 26

Northern Trail Outfitters wants to improve the quality of call-outs from Salesforce to their REST APIs. For this purpose, they will require all API clients/consumers to adhere to REST API Markup Language (RAML) specifications that include field-level definition of every API request and response payload. RAML specs serve as interface contracts that Apex REST API Clients can rely on.

Which two design specifications should the Integration Architect include in the integration architecture to ensure that Apex REST API Clients unit tests confirm adherence to the RAML specs?

Choose 2 answers

- \* Call the Apex REST API Clients in a test context to get the mock response.
- \* Require the Apex REST API Clients to implement the HttpCalloutMock.
- \* Call the HttpCalloutMock implementation from the Apex REST API Clients.
- \* Implement HttpCalloutMock to return responses per RAML specification.

### NEW QUESTION 27

Universal Containers has built an integration module to pull customer support tickets out of various systems and push them to Salesforce as cases. The integration was implemented using Salesforce SOAP API with batch size 200, and the jobs are scheduled to run every 30 minutes to make sure a job completes before the next job starts.

After going Live, they found that jobs are failing occasionally due to a "Max CPU time exceeded" error thrown from a trigger on the case. Reducing the batch size to 100 would resolve the issue, but the jobs would then take an average of 35 minutes to run. Which two options should be considered to resolve the issue and make sure a job completes before the next one starts?

Choose 2 answers

- \* No change to API options, and move the trigger code into a future method.
- \* No change to API options, and move the trigger code into a Queueable Apex
- \* Bulk API with serial option and batch size 100, and no code changes
- \* Bulk API with parallel option and batch size 100, and no code changes.

### NEW QUESTION 28

Universal Containers has an Outbound messaging-Based integration that posts closed opportunities to an ERP system for fulfillment in 1% of the test cases, the integration creates multiple orders for a closed opportunity Which three steps should a Technical Architect take to diagnose the issue?

Choose 3 answers

- \* Review the firewall logs to make sure that the outbound messages are being delivered.
- \* Review the Enterprise Service Bus logs to make sure that successful orders are being acknowledged
- \* Review the outbound Messaging Delivery status logs to make sure that the messages are being delivered and acknowledged by the target system.

- \* Review the Enterprise Service Bus logs to make sure that orders are being created only one time.
- \* Review the outbound Messaging Audit logs to make sure that the messages are being successfully processed by the target system.

### NEW QUESTION 29

Universal Containers would like to use a hard-coded username/password/security token of a user with a System Administrator profile to integrate its back-end system to Salesforce for inbound API calls.

Which two security issues are associated with this approach.

- \* All back-end systems get uncontrolled access to any data within the Salesforce environment.
- \* Unintended password resets will cause the integration to stop working and disrupt business processes.
- \* Apex web services can execute with system privileges with such Salesforce credentials.
- \* Unsecure storage of the credentials may result in hackers gaining unauthorized access to Salesforce.

### NEW QUESTION 30

Universal Containers (UC) has integrations developed between Salesforce and back-end ERP applications.

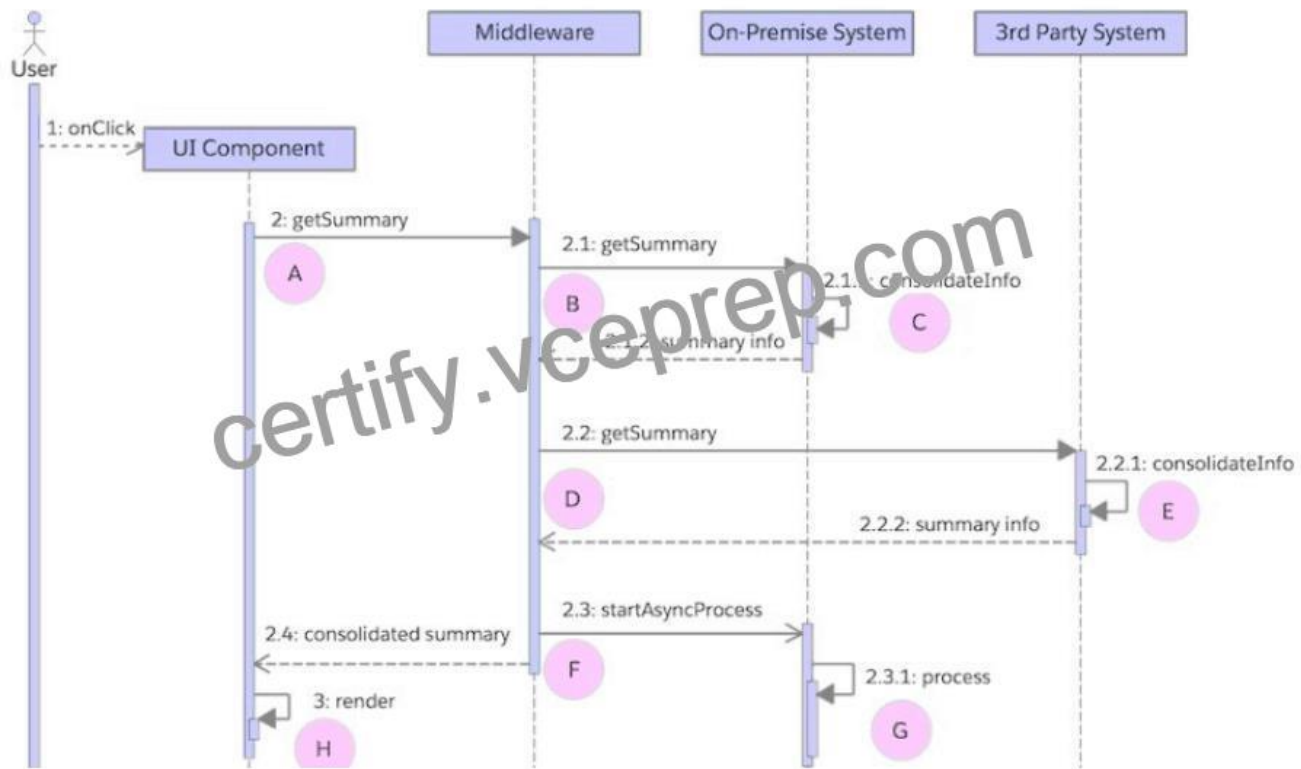
During peak load, UC is getting an error at the integration layer indicating, '&#8220;Login Rate Exceeded&#8221;.

Which two recommendations would mitigate this issue?

- \* Use a different user for each integration.
- \* Set the permission login to never expire for the user.
- \* Cache the session ID to avoid a login call.
- \* Keep re-typing the login call until it's successful.

### NEW QUESTION 31

A company's cloud-based single page application consolidates data local to the application with data from on-premise and 3rd party systems. The diagram below typifies the application's combined use of synchronous and asynchronous calls.



The company wants to use the average response time of its application’s user interface as a basis for certain alerts. For this purpose, the following occurs:

1. Log every call’s start and finish date and time to a central analytics data store.
2. Compute response time uniformly as the difference between the start and finish date and time – A to H in the diagram.

Which computation represents the end-to-end response time from the user’s perspective?

- \* Sum of A to H
- \* Sum of A to F
- \* Sum of A, G, and H
- \* Sum of A and H

**NEW QUESTION 32**

Universal Containers acquires several companies and decides to consolidate all customer service systems used by the acquired companies into one Salesforce Service Cloud. They decide to use an ETL to extract service requests from various systems, apply appropriate transformations, and load cases into Salesforce. Different requests captured by different customer service systems could belong to common accounts in Salesforce, so care must be taken to avoid creating duplicate accounts. Which two API options should be considered to load cases into Salesforce that would be safe from record -locking issues? Choose 2 answers

- \* Bulk API with parallel option and a batch size of 1000 or less
- \* Bulk API with serial option and a batch size of 1000 or less
- \* SOAP API with a batch size of 1000 or less
- \* SOAP API with a batch size of 200 or less

### NEW QUESTION 33

When making an Apex callout, what approach should an Integration Architect recommend for securely transporting sensitive data from Salesforce over an unsecure network connection?

- \* Base64 encode the data before performing the call out from Apex.
- \* Encrypt the data with a shared key before performing the Apex callout.
- \* Use platform Encryption to secure the data before transporting.
- \* Salesforce automatically secures all data transmissions to external systems.

### NEW QUESTION 34

Universal Containers has an external ERP that will manage inventory and initiate shipping logistics after an Opportunity is marked 'Closed Won'; in Salesforce. A 'Shipping Number' needs to be written back to the Opportunity to track related records in the ERP. Sales Reps need to move quickly from one Opportunity to the next.

What integration pattern will satisfy the system reqs while maximizing the efficiency of the Sales Reps?

- \* Remote Process Invocation; Fire and Forget
- \* Batch Data Synchronization
- \* Remote Process Invocation; Request and Reply
- \* Remote Call-In

### NEW QUESTION 35

Universal Containers is building an integration from their employee portal to Salesforce Chatter. They would like their employee portal to read and write to the Chatter API on behalf of the employee using the portal.

What is the correct way to authenticate to the chatter API to meet this requirement?

- \* Use OAuth to authorize the portal to access the chatter API on behalf of the user.
- \* Use OAuth Which will pass their portal credentials to the chatter API.
- \* Use a chatter API integration user which authenticates to Salesforce using OAuth.
- \* Use a chatter API integration user which authenticates to Salesforce using Enterprise WSDL login().

### NEW QUESTION 36

When making an Apex callout, what approach should an Integration Architect recommend for securely transporting sensitive data from Salesforce over an unsecure network connection?

- \* Base64 encode the data before performing the call out from Apex.
- \* Encrypt the data with a shared key before performing the Apex callout.
- \* Use platform Encryption to secure the data before transporting.
- \* Salesforce automatically secures all data transmissions to external systems.

### NEW QUESTION 37

Universal Containers (UC) has third-party MDM database which is responsible for maintaining the data for Customer and Contacts information for its organization. UC wants to keep this information up-to-date in Salesforce so that the information is as current as possible. UC wants to provide bi-directional synchronization of the data between the MDM and Salesforce.

What is the recommended approach to solving this problem?

- \* Create a VisualForce page for Accounts/Contacts that will pull the data from MDM, display it, and send any changes from Salesforce.

- \* Implement a third-party middleware tool to maintain the synchronization between Salesforce and the MDM database as they occur.
- \* Create a Batch process that runs every 5 minutes to pull the changes from MDM and any updates from Salesforce.
- \* Modify the MDM database application to send and receive updates to and from Salesforce via REST or SOAP as they occur.

### NEW QUESTION 38

Which two options should be considered to permit automatic retry of failed updates when loading data into Salesforce?

Choose 2 answers

- \* Bulk API with serial option.
- \* Standard API with parallel option.
- \* Bulk API with parallel option.
- \* Standard API with serial option.

### NEW QUESTION 39

Northern Trail Outfitters (NTO) has hired an Integration Architect to design the integrations between existing systems and a new instance of Salesforce. NTO has the following requirements:

1. Initial load of 2M Accounts, 5.5M Contacts, 4.3M Opportunities, and 45k Products into the new org.
2. Notification of new and updated Accounts and Contacts needs to be sent to 3 external systems.
3. Expose custom business logic to 5 external applications in a highly secure manner.
4. Schedule nightly automated dataflows, recipes and data syncs.

Which set of APIs are recommended in order to meet the requirements?

- \* Bulk API, Chatter REST API, Apex SOAP API, Tooling API
- \* Bulk API, Chatter REST API, Apex REST API, Analytics REST API
- \* Bulk API, Streaming API, Apex REST API, Analytics REST API
- \* Bulk API, Streaming API, Apex SOAP API, Analytics REST API

### NEW QUESTION 40

Universal containers is migrating to Salesforce from a legacy system with existing SMTP-based integrations.

What Salesforce platform capability should an Integration Architect consider?

- \* Custom Apex class with webservice methods that implement the SMTP protocol.
- \* Custom InboundEmailHandler to process the messages.
- \* Lightning connect with an oData/SMTP interchange.
- \* Custom Apex batch job to check for SMTP messages.

### NEW QUESTION 41

UC leverages external MDM as the customer master. When an agent creates or updates an account in Salesforce, it must be created/updated in MDM before it is saved in Salesforce. Sales users should be allowed to navigate to other pages while the account record is saved.

What is the recommended approach?

- \* Make an @future callout to MDM from a trigger with page refresh using Action region.
- \* Make a continuation callout from VF page controller with page refresh using Action poller.
- \* Make an asynchronous callout from VF page controller with page refresh using Action region.
- \* Make a synchronous callout from VF page controller with page refresh using Action region.

#### NEW QUESTION 42

Which two automated methods should an architect use to solve an issue with duplicate contacts?

Choose 2 answers

- \* Write a Batch Apex class to manage the deduplication
- \* Assign new contacts to queues to be reviewed by a data quality team.
- \* Leverage an AppExchange data management tool to de-duplicate contacts.
- \* Enable duplicate management in the org to prevent duplicates.

#### NEW QUESTION 43

Sales representatives at Universal Containers (UC) use Salesforce Sales Cloud as their primary CRM. UC owns a legacy homegrown application that stores a copy of customer data as well. Sales representatives may edit or update Contact records in Salesforce if there is a change.

Both Salesforce and the homegrown application should be kept synchronized for consistency. UC has these requirements:

1. When a Contact record in Salesforce is updated, the external homegrown application should be
2. The synchronization should be event driven.
3. The integration should be asynchronous.

Which option should an architect recommend to satisfy the requirements?

- \* Leverage Platform Events to publish a custom event message containing changes to the Contact object.
- \* Leverage Change Data Capture to track changes to the Contact object and write a CometD subscriber on the homegrown application.
- \* Write an Apex Trigger with the @future annotation.

D Use an ETL tool to keep Salesforce and the homegrown application in sync on a regular cadence.

#### NEW QUESTION 44

Northern Trail Outfitters has recently experienced intermittent network outages in its call center. When network service resumes, Sales representatives have inadvertently created duplicate orders in the manufacturing system because the order was placed but the return acknowledgement was lost during the outage.

Which solution should an architect recommend to avoid duplicate order booking?

- \* Use Outbound Messaging to ensure manufacturing acknowledges receipt of order.
- \* Use scheduled apex to query manufacturing system for potential duplicate or missing orders.
- \* Implement idempotent design and have Sales Representatives retry order(s) in question.
- \* Have scheduled Apex resubmit orders that do not have a successful response.



**Check your preparation for Salesforce Integration-Architecture-Designer On-Demand Exam:**  
<https://www.vceprep.com/Integration-Architecture-Designer-latest-vce-prep.html>