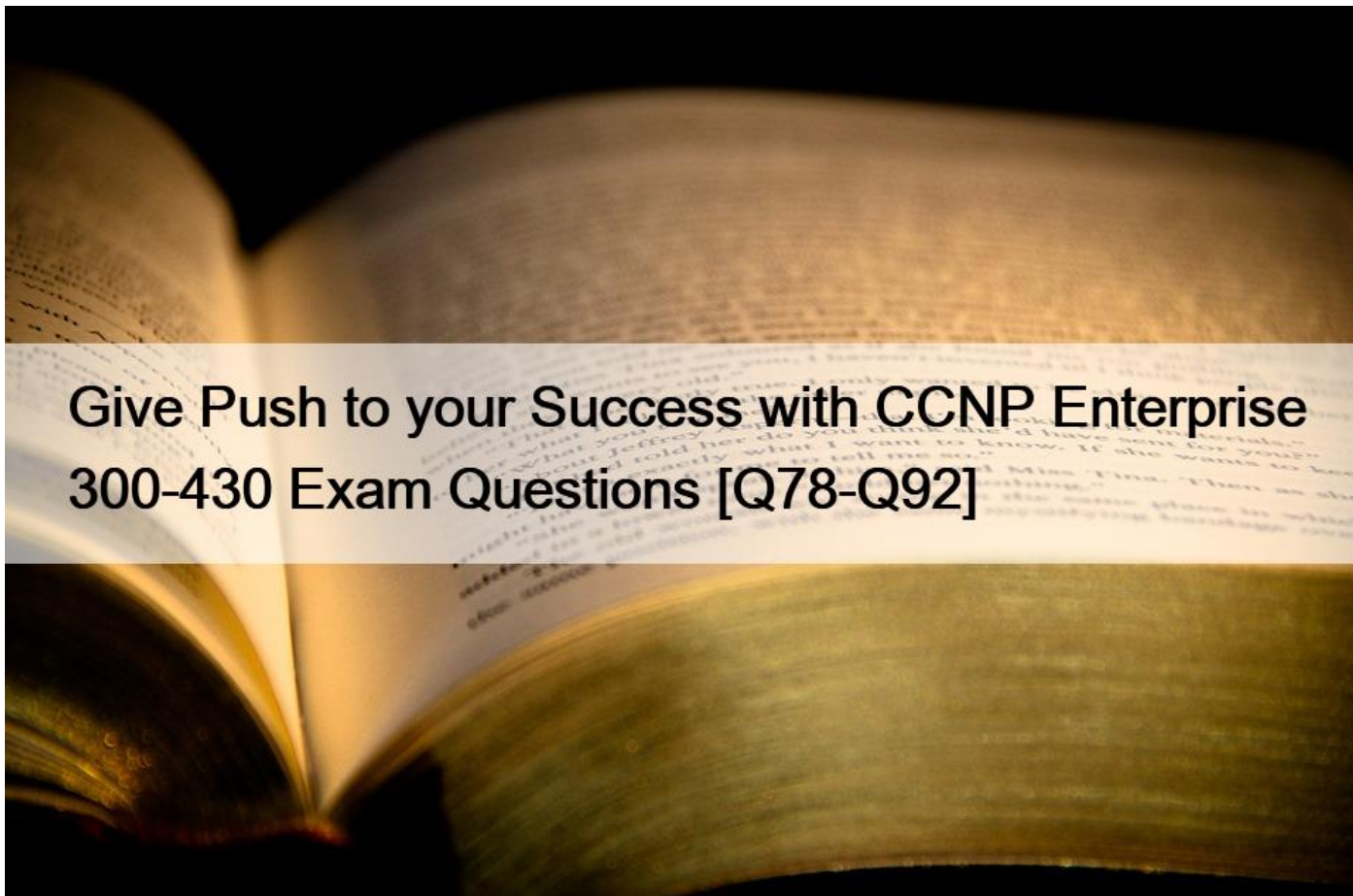


Give Push to your Success with CCNP Enterprise 300-430 Exam Questions [Q78-Q92]



Give Push to your Success with CCNP Enterprise 300-430 Exam Questions
300-430 100% Guarantee Download 300-430 Exam PDF Q&A

How to Prepare for Cisco 300-430: Implementing Cisco Enterprise Wireless Networks Exam **Preparation Guide for Cisco 300-430: Implementing Cisco Enterprise Wireless Networks Exam Introduction**

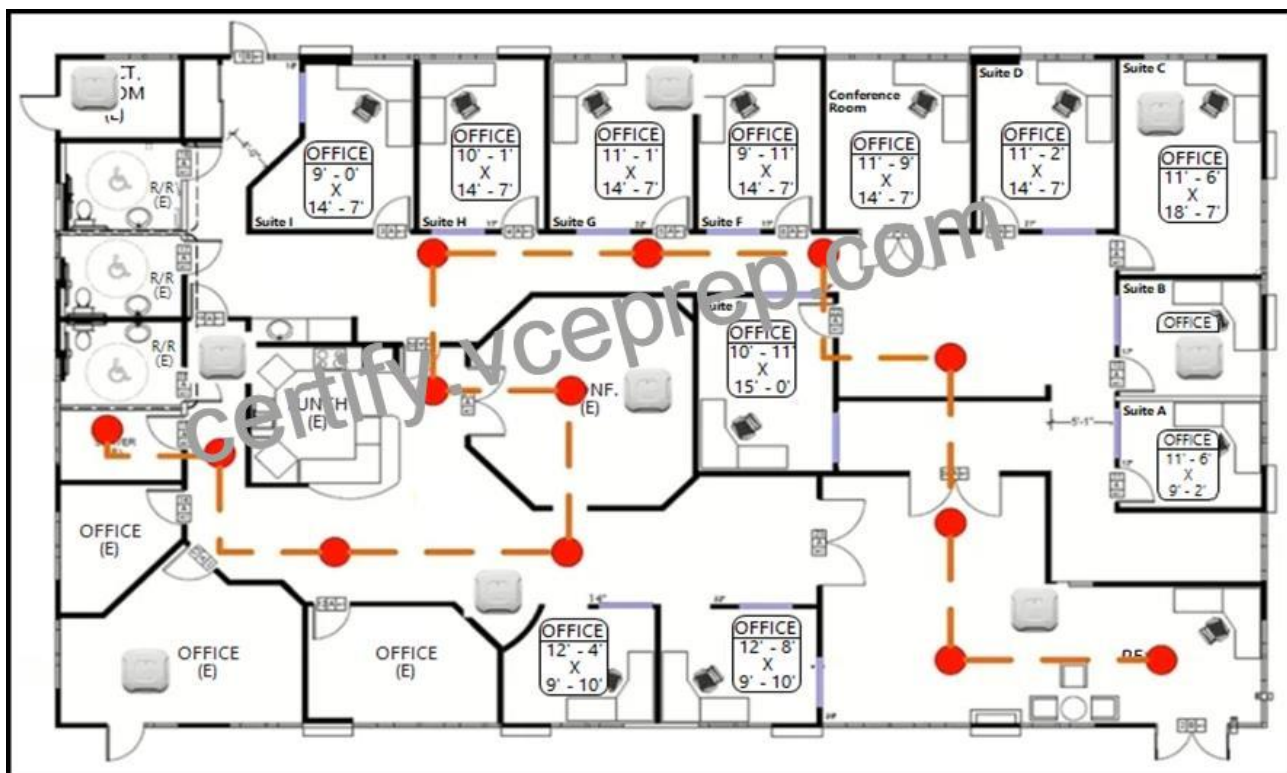
Cisco Systems located in San Jose, California in the heart of Silicon Valley is an American multinational technology corporation. Cisco designs produce and sell hardware, software, telecommunications equipment, and other high-tech services and products for networking. Cisco specializes in unique tech markets, such as the Internet of Things (IoT), domain security, and energy management, through its various acquired subsidiaries, such as OpenDNS, Webex, Jabber, and Jasper.

A world of opportunity is being created by Cisco technology. With Cisco's Training and Certifications, one can power their career with a new learning portfolio that opens opportunities for developers as well as network engineers. A direct path to your technology career ambitions is provided by Cisco's training and certification program. IT technologies are driving the transformation of Cisco's training and qualification programs to prepare teachers, engineers, and developers of software for success in the most important positions in the industry.

Explore the power of the dynamic culture of the Cisco Learning Network to jump-start your certification and lifelong learning goals. Get useful tools for IT training for all Cisco certifications. Access research tools for IT certification, CCNA practice exams, IT wages, and finding IT work.

This exam guide is intended to help you determine if you can complete the Cisco 300-430: Implementing Cisco Enterprise Wireless Networks exam successfully. This guide includes information on the certification test target audience, recommended preparation and documentation, and a full list of exam targets, all to help you obtain a passing grade. To increase your chances of passing the test, different types of **300-430 practice exams** and **300-430 exam dumps** are the best option.

Multicast The questions of this objective cover 10% of the entire content and are dedicated to validating the following expertise: - Explaining how multicast affects wireless networks;- Implementing multicast direct and mDNS.- Implementing multicast within WLAN;- Implementing the components of multicast; **Q78**. Refer to the exhibit.



An engineer needs to configure location services in an office. The requirement is to use FastLocate and achieve higher locations refresh rates. Which location-based technique should be implemented?

- * probe-based
- * location patterning
- * data packet-based
- * angulation

Q79. A company has a single WLAN configured for 802.1x authentication with the QoS set to Silver. This WLAN supports all corporate and BYOD access. A decision has been made to allow users to install Cisco Jabber on their personal mobile devices. Users report poor voice quality when using Jabber. QoS is being applied only as best effort. What must be configured to ensure that the WLAN remains on the Silver class and to ensure Platinum class for Jabber?

- * Configure an AVC profile for the Jabber traffic and apply it to the WLAN.
- * Configure the WLAN to broadcast on 5 GHz radios only and allow Jabber users to connect.
- * Enable Cisco Centralized Key Management on the WLAN so that the Jabber-enabled devices will connect.
- * Configure QoS on the mobile devices that have Jabber installed.

Explanation

When Jabber traffic reaches the wireless controller, the controller performs deep packet inspection to recognize the flow. If the flow is recognized, traffic is marked according to the AVC policy. For example, in situations where a wireless client sends unmarked Jabber traffic, this traffic upon re

https://www.cisco.com/c/en/us/td/docs/wireless/controller/technotes/81/Jabber_in_WLAN/b_Jabber_in_WLAN.

Q80. A network engineer is implementing a wireless network and is considering deploying a single SSID for device onboarding.

Which option is a benefit of using dual SSIDs with a captive portal on the onboard SSID compared to a single SSID solution?

- * limit of a single device per user
- * restrict allowed devices types
- * allow multiple devices per user
- * minimize client configuration errors

Q81. An engineer must create an account to log in to the CLI of an access point for troubleshooting. Which configuration on the WLC will accomplish this?

- * ReadWrite User Access Mode
- * Global Configuration Enable Password
- * SNMP V3 User
- * Allow New Telnet Sessions

https://www.cisco.com/c/en/us/td/docs/wireless/controller/7-4/configuration/guides/consolidated/b_cg74_CONSOLIDATED/b_cg74_CONSOLIDATED_chapter_01101011.html

Q82. The network management team in a large shopping center has detected numerous rogue APs from local coffee shops that are broadcasting SSIDs. All of these SSIDs have names starting with ATC (for example, ATC302, ATC011, and ATC566). A wireless network engineer must appropriately classify these SSIDs using the Rogue Rules feature. Drag and drop the options from the left onto the categories in which they must be used on the right. Not all options are used.

The image shows a configuration interface for Rogue Rules. On the left, there are six light blue boxes representing options to be dragged:

- friendly
- malicious
- set substring-ssid to ATC
- set SSID value to ATC
- external
- internal

On the right, there are three yellow boxes representing categories where the options should be placed:

- Type
- Source
- Condition

A watermark 'certify.vceprep.com' is visible across the interface.



Q83. What is configured to use more than one port on the OEAP to extend the wired network’s?

- * AAA override
- * client load balancing
- * remote LAN ACL
- * remote LAN

Normally Cisco Office Extend AP (OEAP600) allow user to extend their office network into any public place (like home, venue, etc) without much trouble. This AP has 4 ports including WAN port where one (yellow port) of them labeled as remote-LAN that can be used to extend one of your wired LAN.

Q84. An engineer configures the wireless LAN controller to perform 802.1x user authentication. Which configuration must be enabled to ensure that client devices can connect to the wireless, even when WLC cannot communicate with the RADIUS?

- * pre-authentication
- * local EAP
- * authentication caching
- * Cisco Centralized Key Management

Local EAP

Local EAP is an authentication method that allows users and wireless clients to be authenticated locally. It is designed for use in remote offices that want to maintain connectivity to wireless clients when the backend system becomes disrupted or the external authentication server goes down. When you enable local EAP, the controller serves as the authentication server and the local user database, which removes dependence on an external authentication server. Local EAP retrieves user credentials from the local

Q85. An engineer must configure MSE to provide guests access using social media authentication. Which service does the engineer configure so that guests use Facebook credentials to authenticate’?

- * Visitor Connect
- * Client Connect
- * Social Connect
- * Guest Connect

Q86. Refer to the exhibit.

```
(Cisco WLC) >show dhcp proxy
DHCP ProxyBehaviour: enabled
!
Interface Vlan63
 ip address 10.10.63.252/22
 description Dot1x_BYOD
 no shutdown
!
```

A network administrator deploys the DHCP profiler service in two ISE servers: 10.3.10.101 and 10.3.10.102. All BYOD devices connecting to WLAN on VLAN63 have been incorrectly profiled and are assigned as unknown profiled endpoints. Which action efficiently rectifies the issue according to Cisco recommendations?

- * Nothing needed to be added on the Cisco WLC or VLAN interface. The ISE configuration must be fixed.
- * Disable DHCP proxy on the Cisco WLC.
- * Disable DHCP proxy on the Cisco WLC and run the ip helper-address command under the VLAN interface to point to DHCP and the two ISE servers.
- * Keep DHCP proxy enabled on the Cisco WLC and define helper-address under the VLAN interface to point to the two ISE servers.

Q87. An engineer must track guest traffic flow using the WLAN infrastructure. Which Cisco CMX feature must be configured and used to accomplish this tracking?

- * analytics
- * connect and engage
- * presence
- * detect and locate.
- **PRESENCE ANALYTICS:** Cisco Presence Analytics service is a new analytics engine that detects the presence of visitors via their mobile devices interactions even a single network access point. The probe requests which are transmitted from the wireless devices provide information, which is used to identify the ge

Q88. A wireless engineer is configuring LWA using ISE. The customer is a startup company and requested the wireless users to authenticate against a directory, but LDAP is unavailable. Which solution should be proposed in order to have the same security and user experience?

- * Use SAML.
- * Use the internal database of the RADIUS server.
- * Use a preshared key on the corporate WLAN.
- * Use Novell eDirectory.

Q89. An engineer must run a Client Traffic Stream Metrics report in Cisco Prime Infrastructure. Which task must be run before the report?

- * scheduled report
- * radio performance
- * client status
- * software

Q90. An engineer must configure a Cisco WLC to support Cisco Aironet 600 Series OfficeExtend APs. Which two Layer 2 security options are supported in this environment? (Choose two.)

- * Static WEP + 802.1X
- * WPA+WPA2
- * Static WEP
- * CKIP
- * 802.1X

For Layer 2 Security, the following options are supported for the 600 Series OfficeExtend Access Point:

- None
- WPA+WPA2
- Static WEP
- 802.1X (only for remote LANs)

certify.vceprep.com

Q91. Which AP model of the Cisco Aironet Active Sensor is used with Cisco DNA Center?

- * 3800s
- * 4800i
- * 3600e
- * 1800s

<https://www.cisco.com/c/en/us/products/collateral/wireless/aironet-active-sensor/guide-c07-743929.html>

Q92. Which two restrictions are in place with regards to configuring mDNS? (Choose two.)

- * mDNS uses only UDP port 5436 as a destination port.
- * mDNS cannot use UDP port 5353 as the destination port.
- * mDNS is not supported on FlexConnect APs with a locally switched WLAN.
- * Controller software must be newer than 7.0.6+.
- * mDNS is not supported over IPv6.

Restrictions for Configuring Multicast DNS

- mDNS over IPv6 is not supported.
- mDNS snooping is not supported on access points in FlexConnect mode in a locally switched WLAN and mesh access points. multicast traffic including mDNS is simply bridged between the local VLAN and the SSID.
- mDNS is not supported on remote LANs.

certify.vceprep.com

Get 300-430 Actual Free Exam Q&As to Prepare Certification: <https://www.vceprep.com/300-430-latest-vce-prep.html>]