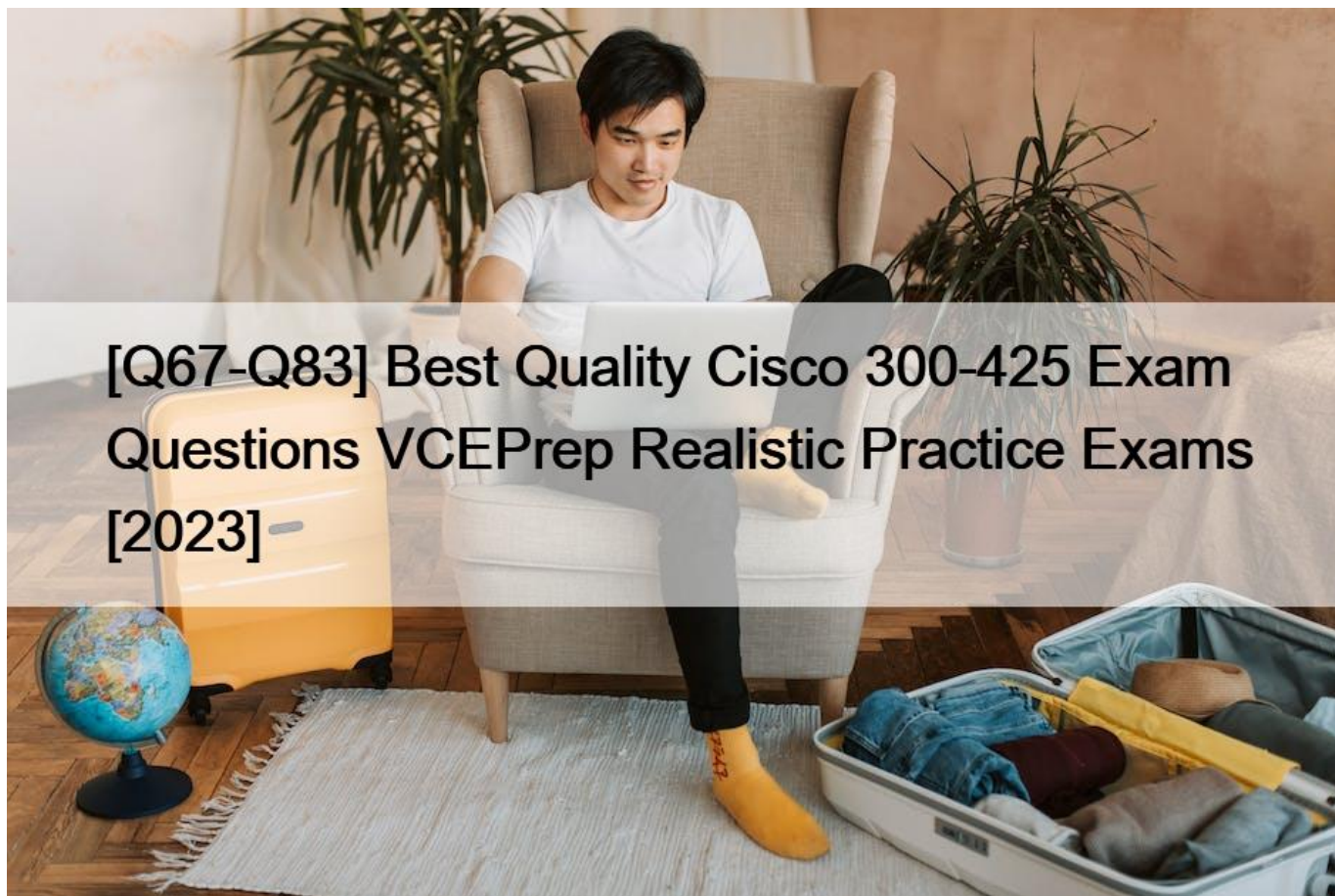


[Q67-Q83 Best Quality Cisco 300-425 Exam Questions VCEPrep Realistic Practice Exams [2023]



[Q67-Q83] Best Quality Cisco 300-425 Exam Questions VCEPrep Realistic Practice Exams [2023] -

Best Quality Cisco 300-425 Exam Questions VCEPrep Realistic Practice Exams [2023]
Critical Information To Designing Cisco Enterprise Wireless Networks Pass the First Time

What Are the Topics Tested in Cisco ENWLS 300-425? If you want to get the Enterprise Wireless Design certification or CCNP Enterprise by passing the ENWLS 300-425 exam, you should prepare to demonstrate your skills and knowledge related to the following four major topics: - WLAN High Availability- Wireless and Wired Infrastructure- Wireless Site Survey- Mobility

The first topic covers approximately 25% of the exam's questions. When studying for it, candidates will learn about how to collect design requirements and how to evaluate different constraints. They will develop advanced skills on how to manage client density, AP type, real-time apps, deployment type, and security. Also, this domain covers information on how to describe material attenuation and how to weigh its effects on their wireless designed network. Besides, applicants should be proficient in performing and analyzing Layer 1, pre-deployment, post-deployment, and predictive site survey. Last but not least, another subtopic included in this section handles the proper utilization of the planning and evaluation tools for the most important network metrics. Candidates will discover how to use Spectrum Analyzer, Ekahau, AirMagnet, and Chanalyzer tools.

The second domain has 25% of the syllabus and focuses on mobility concepts. To manage related questions in the test, candidates need to understand how to design a mobility group following the requirements imposed by different mobility roles. Also, this topic takes examinees through various concepts that will allow them to properly optimize client roaming. Another important element

included here is mobility tunneling validation for the data and control path.

The third section emphasizes wired and wireless infrastructure. Its total weight in the exam's content is around 30%. It is the most important topic since knowledge in this sphere helps individuals determine which are the most important physical infrastructure requirements for their business environment, handle AP power, cabling, mounting, grounding, and switch port capacity. They will also know more about determining logical infrastructure conditions. During preparation, candidates will discover how to identify the proper WLC/AP licensing requirements based on the current wireless architecture. If you want to get the passing score from the first attempt, you should also get familiar with radio management design and applying proper design management tools for different types of wireless networks. Another sub-topic included here handles wireless bridging and high-density wireless network design. The final topic makes one proficient in WLAN high availability. They will learn about high availability design for controllers, Stateful Switchover, Network Availability through LAG, as well as priority and redundancy anchor controller. Besides, the candidates will know how to design high availability networks suitable for APS. In this sub-topic, they will handle AP prioritization and fallback concepts.

Now you can read the solution to Prepare the Cisco 300-425 Exam

Types of sources originally, there are the research study guides along with magazines that are defined and also ideal for establishing knowledge from ground up afterwards there are video clip tutorials along with talks that can somehow reduce the discomfort of via research study and are rather a whole lot much less plain for some prospects yet these demand time as well as concentration from the student. Smart Prospects that want to produce a strong structure in all Test topics in addition to additionally associated contemporary modern technologies generally integrate video clip talks with research study styles to reap the benefits of both nevertheless, there is one essential preparation task device as usually forgotten by a great deal of leads the technique tests.

No person likes bankruptcy, typically in intricate setups where certification needs a large amount of research study, planning and likewise interest. An initiative is so demanding that it can even break students' nerves. Our download Exams are so efficient that you will definitely fail to remember the failings. Problems as well as remedies are so preferably developed that there is no chance of stopping working. However, there is little circumstance where the trainee has really give up working after obtaining our aid, however, even if they do, we supply a complete reimbursement of the settlement. Strategy Examinations are created to make students comfortable with the genuine exam condition. If we see the statistics most trainees stop working not as a result of that prep job yet as a result of Exam anxiety the concern of the unknown. VCEPrep Professional Group recommends you to prepare some notes on these subjects together with it do not forget to exercise **Cisco 300-425 Dump** which had in truth been composed by our Experts Team, Both these will assist you a good deal to eliminate this Exam with amazing marks.

Key Exam Details

The Cisco 300-425 exam contains about 100 questions in total. The time limit is 90 minutes, which means that you have to deal with all the items during this period. The questions in this test are usually of various types. For example, there are drag and drop and multiple-choice questions.

The 300-425 certification test is known to be offered in English and Japanese. The cost that you should pay for the voucher is \$300. This is what is paid within the borders of the United States. However, the price may vary. The applicants outside the USA should check and confirm the fee on the official website of the vendor.

To prepare for this Cisco exam, the learners can choose different study approaches. One of them is signing up for the instructor-led training course offered by Cisco on the official webpage. Designing Cisco Enterprise Wireless Networks is a paid course, which is created primarily for those individuals who already have some working experience in designing Cisco wireless networks.

Q67. During a wireless network design a customer requires wireless coverage on the perimeter of a building But also wants to minimize signal leakage from the wireless network Which antenna should be used to accomplish this design?

- * patch
- * dipole
- * monopole
- * omnidirectional

<https://www.mwrf.com/technologies/passive-components/article/21844577/cshaped-slot-serves-uw-b-antenna>

Q68. An engineer must speed up the reauthentication delays that are being experienced on the wireless infrastructure by deploying a key-caching mechanism. Which mechanism must be configured?

- * PEAP
- * FT
- * PMF
- * GTK-randomization

802.11r, which is the IEEE standard for fast roaming, introduces a new concept of roaming where the initial handshake with the new AP is done even before the **Transition (FT)**. The initial handshake allows the client and APs to do the Pairwise Transient Key (PTK) calculation in advance. These PTK keys are applied to the request or response exchange with new target AP.

Q69. Which statement about creating a mobility group is true, excluding mobility anchors?

- * Each WLC must use the same mobility name and be defined as a peer in each other's static mobility members list.
- * If WLCs with HA SSO are deployed, each WLC in the WLC HA pair considered separately as a mobility peer.
- * The WLCs do not have to be of the same model or type to be a member of a mobility group, however each member should be running different software versions.
- * A mobility groups does not require all WLCs in the group to use the same virtual IP address.
- **The HA pair of AireOS WLCs should be considered as separated WLCs with the same exact configuration**

Q70. An enterprise has moved most services to the cloud, including email applications and real-time communication. Which feature must be enabled on the wireless network to improve the user experience?

- * QoS
- * Radio management
- * Interference mitigation
- * Fast secure roaming

Explanation

<https://community.cisco.com/t5/wireless-mobility-documents/what-is-cckm-and-how-does-it-affect-fast-an>

Q71. A network engineer is designing a new wireless network. The network needs to have these characteristics:

- support high client concentration
- optimize client performance
- avoid interference

Which approach should be taken?

- * Deploy APs near each other for 5 GHz coverage, and disable the 2.4 GHz radios for some APs.
- * Deploy APs near each other for 2.4 GHz coverage, and disable the 5 GHz radios for all APs.
- * Deploy APs near each other for 5 GHz coverage, and enable the 2.4 GHz radios for all APs.
- * Deploy APs near each other for 2.4 GHz coverage, and disable the 5 GHz radios for some APs.

Explanation

https://www.cisco.com/c/en/us/td/docs/wireless/controller/technotes/86/b_Cisco_Wireless_LAN_Controller_Con

Q72. A wireless engineer is hired to design a network for a technology company. The company campus has four buildings and a warehouse with access points that provide full wireless coverage as well as a pair of WLCs located in the core of the network. Which type of wireless architecture is being used?

- * unified deployment
- * autonomous deployment
- * centralized deployment
- * distributed deployment

Centralized - Works across APs and WLCs in the same Mobility group

Q73. A wireless engineer is utilizing the voice readiness tool in Cisco Prime for a customer that wants to deploy Cisco IP phones. Which dBm range is the network inspected against?

- * -78 to -65 dBm
- * -72 to -67 dBm
- * -85 to -65 dBm
- * -85 to -67 dBm

Explanation

Default voice minimum RSSI is -75 dBm. but cisco recommend to get RSSI better than -67 dBm.

https://www.cisco.com/c/en/us/td/docs/net_mgmt/prime/infrastructure/34/user/guide/bk_CiscoPrimeInfrastructur minimum is -90 and maximum is -67 for IP phone

Q74. A wireless engineer must optimize RF performance for multiple buildings with multiple types of construction and user density. Which two actions must be taken? (Choose two.)

- * Configure Flexconnect groups for each building.
- * Configure WMM profiles for each building.
- * Configure AP groups for each area type.
- * Configure RF profiles for each area type.
- * Enable DTPC on the network.

Explanation

https://www.cisco.com/c/en/us/td/docs/wireless/controller/8-10/config-guide/b_cg810/configuring_ap_groups.ht

Q75. An engineer has successfully configured high availability and SSO using two Cisco 5508 Wireless LAN Controllers. The engineer can access the Active Primary WLC, but the Secondary Standby WLC is not accessible. Which two methods allow access to the standby unit? (Choose two.)

- * via the console connection
- * SSH to the redundancy management interface of the primary WLC
- * SSH to the service port interface
- * SSH to the virtual interface of the secondary WLC
- * SSH to the management interface of the primary WLC

Once SSO is enabled, the Standby WLC can be accessed via console connection or via SSH on the service port and on the redundant management interface.

Q76. What is a key benefit of using a GRE tunnel to provide connectivity between branch offices and headquarters?

- * Authentication, integrity checking, and confidentiality
- * Less overhead
- * Dynamic routing over the tunnel
- * Granular QoS support
- * Open standard

* Scalability

Generic routing encapsulation. Tunneling protocol developed by Cisco that can encapsulate a wide variety of protocol packet types inside IP tunnels, creating a virtual point-to-point link to Cisco routers at remote points over an IP internetwork.

Q77. An engineer must ensure that the wireless network can accomplish fast secure roaming by way of caching keys on the access points. Which key caching mechanism is enabled by default on a Cisco AireOS WLC?

- * SKC
- * OKC
- * 802.11r
- * CCKM

Section: Mobility

Explanation/Reference:

Q78. A wireless network consultant must assess an existing wireless LAN controller. Which section must the consultant check before replacing the old APs with APs that are IEEE 802.11ac-capable?

- * number of AP licenses
- * controller PSU
- * throughput capacity
- * software version

Explanation

<https://www.cisco.com/c/en/us/products/collateral/wireless/catalyst-9100ax-access-points/nb-06-802-11ax-faq-ct>

Q79. A network engineer is preparing for an office site survey with a height of 2.5 meters. Which three components are recommended to complete the survey? (Choose three.)

- * Use a battery pack to power APs
- * Use a drawing of the office space to draw AP and client placements.
- * Use DoS attack on APs while measuring the throughput.
- * Use APs with directional antennas.
- * Use APs with external antennas.
- * Use APs with built-in antennas.

https://www.cisco.com/c/en/us/td/docs/wireless/technology/mesh/8-4/b_mesh_84/Site_Preparation_and_Planning.html#ID3405

Q80. A wireless engineer is designing a wireless network to support real-time applications over wireless. Which IEEE protocol must the engineer enable on the WLC so that the number of packets that are exchanged between an access point and client are reduced and fast roaming occurs?

- * 802.11w
- * 802.11r
- * 802.11i
- * 802.11k

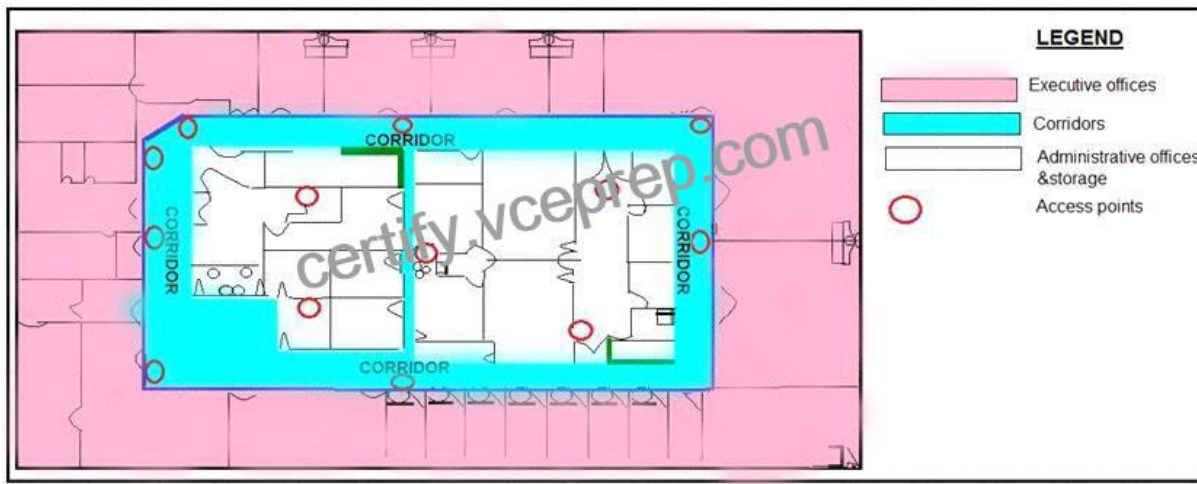
802.11r reduces the number of packets that are exchanged between the client and an AP. The client preauthenticates to the AP it will roam to before actually roaming. This means the roam itself occurs faster because the AP already has the client authentication credentials cached, resulting in fewer packets required between client and the AP.

Q81. Guest anchoring is configured for a newly created SSID for your company. It has been noticed that the mobility tunnels are not up, and that MPING fails from your foreign WLC to the anchor WLC. What is the reason that it is failing?

- * A rule is needed at the firewall to allow UDP port 16666 for communication to work.

- * A rule is needed at the firewall to allow UDP port 97 for communication to work.
- * A rule is needed at the firewall to allow TCP port 97 for communication to work.
- * A rule is needed at the firewall to allow TCP port 16666 for communication to work.
 - UDP 16666 for tunnel control traffic
 - IP Protocol 97 for user data traffic
 - UDP 161 and 162 for SNMP

Q82. Refer to the exhibit.



What is the main reason why the Wi-Fi design engineer took a different approach than installing the APs in the offices, even though that installation provides better coverage?

- * aesthetics
- * transmit power considerations
- * antenna gain
- * power supply considerations

Explanation

<https://www.cisco.com/en/US/docs/solutions/Enterprise/Mobility/emob30dg/RFDDesign.html#wp1000551>

Q83. A high-density wireless network is designed. Which Cisco WLC configuration setting must be incorporated in the design to encourage clients to use the 5 GHz spectrum?

- * Band Select
- * RRM
- * Cisco Centralized Key Management
- * load balancing

Band Select will impact the initial scan, steering clients towards 5 GHz

300-425 EXAM DUMPS WITH GUARANTEED SUCCESS: <https://www.vceprep.com/300-425-latest-vce-prep.html>