

Heroku-Architecture-Designer Exam Dumps Pass with Updated Aug-2022 Tests Dumps [Q31-Q54]



Heroku-Architecture-Designer Exam Dumps Pass with Updated Aug-2022 Tests Dumps [Q31-Q54]

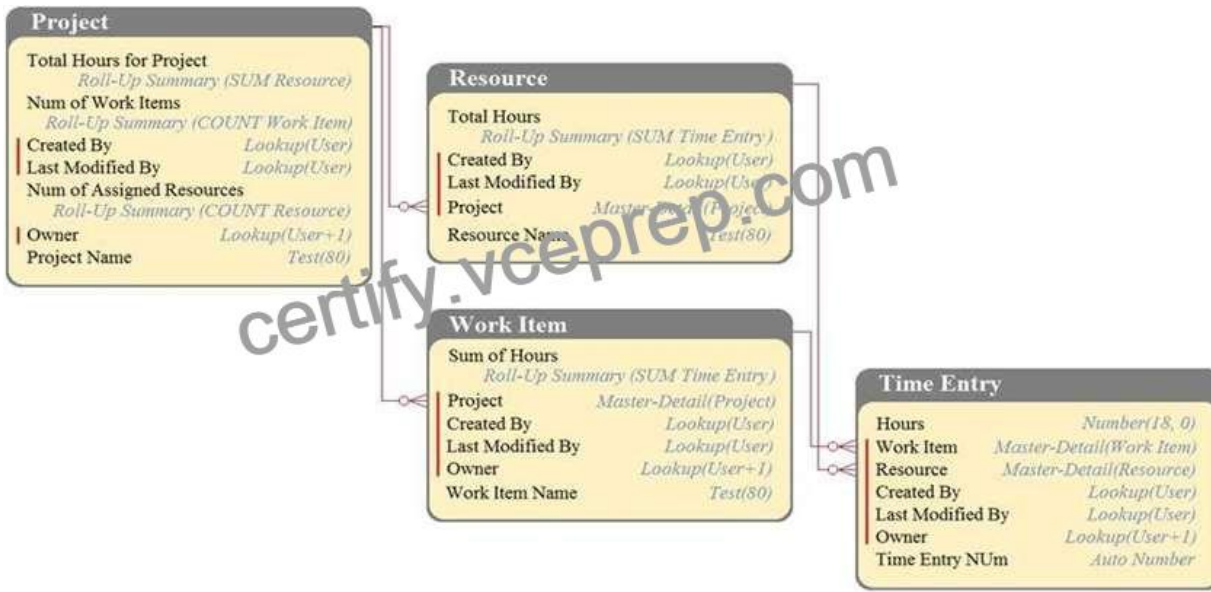
Heroku-Architecture-Designer Exam Dumps Pass with Updated Aug-2022 Tests Dumps
Heroku-Architecture-Designer exam questions for practice in 2022 Updated 185 Questions

Salesforce Heroku-Architecture-Designer Exam Syllabus Topics:

TopicDetailsTopic 1- Describe The Features Of Enterprise Teams- Recommend Architectures That Use The Twelve-Factor App Methodology CorrectlyTopic 2- Including Various Add-Ons, Buildpacks, And Heroku Buttons- Architect Scalable Solutions That Are Performant Even During High Traffic SpikesTopic 3- Demonstrate How Features Of Heroku Enterprise Can Improve A System's Architecture- Architect Solutions Using Heroku RedisTopic 4- Demonstrate The Ability To Prescribe A Third-Party Add-On And Add-On SharingTopic 5- Describe The Use Cases Of Dataclips- Security, And Common Use Cases For Follower DatabasesTopic 6- Role Of Buildpacks In Slug Creation- Demonstrate An Understanding Of The Basics Behind Building And Deploying Apps On HerokuTopic 7- Recommend When An App Should Run In The Private Space Runtime Versus The Common RuntimeTopic 8- Construct Architectures Which Leverage Heroku To Achieve Different Security Certifications- Describe The Compliance Features Of Heroku ShieldTopic 9- Architect And Deploy Solutions Using Add-Ons And Other Components From The Elements MarketplaceTopic 10- Architect Solutions Using Apache Kafka On Heroku To Facilitate Streaming Communication Between ApplicationsTopic 11- Demonstrate Knowledge Of Heroku Postgres, Including Data HandlingTopic 12- Recommend Networking Solutions That Use Heroku Private Spaces Or The Common Runtime

NO.31 DreamHouse Realty has a data model as shown in the image. The Project object has a private sharing model, and it has Roll-Up summary fields to calculate the number of resources assigned to the project, total hours for the project, and the number of work items associated to the project.

There will be a large amount of time entry records to be loaded regularly from an external system into Salesforce.



What should the Architect consider in this situation?

- * Load all data after deferring sharing calculations.
- * Calculate summary values instead of Roll-Up by using workflow.
- * Calculate summary values instead of Roll-Up by using triggers.
- * Load all data using external IDs to link to parent records.

NO.32 Universal Containers wants to give Field Technicians the ability to create follow-up appointments if they are unable to complete a Work Order due to missing inventory.

What should a Consultant implement to meet this requirement?

- * Implement a Quick Action to create a new Service Appointment on the existing Work Order.
- * Implement a Quick Action to create a new Work Order Line Item on the existing Work Order.
- * Implement a Macro to generate Service Appointments on the existing Work Order.
- * Implement a Custom Button to Create a Service Appointment on the existing Work Order.

NO.33 What set of configurations make up Scheduling Policies and let companies adhere to their business constraints and preferences?

- * Service Objectives and Work Rules
- * Service Levels and Work Rules
- * Service Objectives and Work Types
- * Service Contracts and Service Levels

Explanation/Reference:

NO.34 A customer wants to sync data between their Salesforce org and Heroku Postgres.

Which two limitations should an Architect remember when recommending Heroku Connect? (Choose two.)

- * Heroku Connect can only access fields and objects that its associated Salesforce integration user can access.
- * Heroku Connect does not support all Salesforce objects and fields.
- * Heroku Connect does not provide an API.
- * Heroku Connect cannot sync custom objects.

NO.35 Which three overview cards does the Field Service mobile app provide as context to Technicians on upcoming Service Appointments? (Choose three.)

- * Product Catalog
- * Site Details
- * Asset History
- * Contact
- * Address

Explanation

NO.36 Universal Containers has an initiative to increase customer satisfaction by committing preferred resources to accounts and providing prompt service.

Which two Scheduling Policies would assist to meet this initiative? (Choose two.)

- * Soft Boundaries
- * High Intensity
- * Emergency Policy
- * Customer First

NO.37 Get Cloudy Consulting needs to evaluate the completeness and consistency of contact information in Salesforce. Their sales reps often have incomplete information about their accounts and contacts. Additionally, they are not able to interpret the information in a consistent manner. Get Cloudy Consulting has identified certain `key` fields which are important to their sales reps.

What are two actions Get Cloudy Consulting can take to review their data for completeness and consistency?

(Choose two.)

- * Run one report per key field, grouped by that field, to understand its data variability.
- * Run a process that can fill in default values for blank fields.
- * Run a report that shows the percentage of blanks for the important fields.
- * Run a report which shows the last time the key fields were updated.

NO.38 A client wants to migrate their on-premise application to Heroku. The application maintains a local, in-memory cache for its data store to improve performance.

What should an Architect advise the client about running the application on Heroku?

- * The application should declare its in-memory cache as a separate process type to preserve it across deploys.
- * All of the application's web dynos will share a single in-memory cache.
- * The application should replicate its in-memory cache to a local disk to preserve it across deploys.
- * The application's in-memory cache might be cleared at any time.

NO.39 A client wants to use Heroku to build a data bridge between Salesforce and Google Cloud Platform (GCP).

Which combination of Heroku features should an Architect recommend to secure the connection between Heroku and GCP?

- * Heroku Shield Private Spaces and Heroku Shield Connect
- * Heroku Private Spaces and Private Space VPN Connections
- * Heroku Private Spaces and Private Space Peering
- * Heroku Shield Private Spaces and Internal Routing

NO.40 Universal Containers has Role-based Technicians and Managers who handle Service Appointments. Many times, Technicians arrive on-site but are unable to gain access to the customer's equipment. In this scenario, only the Manager has permission to cancel the Service Appointment.

How should a Consultant recommend adhering to this business process?

- * Assign Permission Sets that allow Status Transitions.
- * Allow Status Transitions based on Role.
- * Limit Status Transitions based on Profile.
- * Configure Status Transitions based on Resource Type.

NO.41 Universal Containers (UC) has an app that allows a customer to schedule a compute-intensive job. It allows the customer to schedule the job on an ad-hoc basis. UC has decided to break up the app into the following services: Website: an Interface for their customers; Billing: generates monthly invoices based on usage metrics; Traffic Cop: manages the job queue, job definitions and job schedule; Job Runner; runs jobs that Traffic Cop queues up. It is responsible for self-introspection and self-scaling. UC also wants to create a data lake for analytics. What foundational technology and design should an Architect use to manage communication between these services?

- * Apache Kafka on Heroku as a bus between all services Create topics for billing, jobs, and website clicks Create an additional service, which will subscribe for all topics, and dump every message into a data lake
- * Heroku Redis, create a large Redis store. Allow each service to place messages with an agreed-upon format into a single queue, backed by the Redis store Services listen for messages addressed to them and take action on them. Redis will serve as the data lake.
- * Heroku Connect and Salesforce Sync all relevant data into Salesforce and allow it to flow into each service Create custom objects for each service and allow them to post to each other's objects as needed.

Push data from Salesforce into Heroku Postgres for a data lake.

- * Apache Kafka on Heroku Create a Kafka queue for each service. Create a central routing service that connects to all of the Kafka queues and routes data. The central router is attached to a data lake, and pushes every message into it.

Explanation

<https://devcenter.heroku.com/articles/private-spaces#private-ip-ranges>

NO.42 you can build Canvas apps and run them on Heroku with of the following languages:

- * Node, js / JavaScript
- * All of these
- * Python
- * Java, Scala, Clojure
- * PHP

NO.43 The best use of Canvas apps is to:

- * Render custom widgets on Chatter feeds
- * All of these
- * Display third-party apps in Salesforce
- * Display real estate photos in Salesforce for house listings

NO.44 Universal Containers is looking to implement Entitlement Management to meet the following requirements:

- 1) Any employee from the customer account is eligible for support.
- 2) Specific purchased products are eligible for support.

What Objects should be set up for Entitlement Management?

- * Accounts and Service Contracts
- * Contacts and Service Contracts
- * Accounts and Assets
- * Contacts and Assets

NO.45 A healthcare client is creating a web portal for their customers on Heroku, which is sourced from a Salesforce instance. Some of the Salesforce data they wish to display falls under HIPAA compliance, and their auditors have determined this data must be stored encrypted-at-rest. To satisfy this requirement, they have enabled Platform Encryption on Salesforce.

They are investigating Heroku Shield Private Spaces, Shield Dynos, Shield Postgres, and Shield Heroku Connect.

How will Shield Heroku Connect interact with the encrypted fields in Salesforce?

- * Shield Heroku Connect will be able to access only cypher text in the fields from Salesforce. They will need to import the encryption key from Salesforce to decrypt to store in Shield Postgres.
- * Shield Heroku Connect will be able to synchronize data from fields in Salesforce without additional customization, but any writes will need to be encrypted using the Salesforce encryption key first before being written.
- * Shield Heroku Connect requires customization on the Salesforce side to decrypt the data before transmitting to Heroku.
- * Shield Heroku Connect will be able to synchronize data bidirectionally without additional customization.

Explanation/Reference:

NO.46 A client has an existing Heroku Connect integration. They would like to extend the integration to ad Attachments (which are related binary files) from a mapped Salesforce object. What advice should an Architect provide?

- * A file storage system needs to be added to the Heroku Connect mapping to sync binary files.
- * Heroku Connect does not support binary files: therefore migration must be done using another method
- * A column of type Binary String must be added manually to the Heroku Postgres table and amend Attachments before binary transfer can be enabled.
- * An additional object mapping must be added for the Attachments table in Heroku Connect.

Explanation

–

<https://devcenter.heroku.com/articles/using-sso-services-with-heroku#prerequisites-for-sso-with-heroku>

NO.47 Heroku add-ons are cool because they:

- * Give you the ability to add complex functionality to your application without having to manage the underlying software or infrastructure.
- * Accessorize your dynos with over-clocked CPU power and faster I/O speeds
- * Can be provisioned easily from the Heroku Enterprise Flea Market system.
- * Cost nothing – billing is easy because they’re always provided at no additional cost with every Heroku Enterprise account.

NO.48 Universal Containers wants their Technicians to record Asset Number using a barcode scanner when completing Work Orders.

What field type should be configured to capture this information?

- * Barcode
- * Date
- * Formula
- * Text

NO.49 Part of a client's design is the ability to easily share between two applications running on Heroku.

What should an Architect recommend?

- * Attach a single storage add-on, such as Heroku Postgres, to both applications.
- * Create Foreign Data Wrappers to expose the tables from one database to another.
- * Provision Heroku Connect to sync the data into a custom object in Salesforce.
- * Provision Apache Kafka on Heroku to easily stream the data between the two apps.

NO.50 A client wants to create a secure network connection between Heroku applications running in a Private Space and an AWS VPC.

Which Heroku feature should an Architect recommend to create the connection?

- * Internal Routing
- * Private Space Peering
- * Private Space VPN connections
- * Heroku Connect

Explanation

– <https://devcenter.heroku.com/articles/event-driven-microservices-with-apache-kafka>

NO.51 Universal Containers (UC) wants to generate Work Orders from their Customer Service Cases. UC would like the Work Order to be linked to the Case and have the Customer Service Representative select a pre-defined template for the Work Order within the Service Console.

Which two items should a Consultant recommend in order to achieve this? (Choose two.)

- * Use Record Types to achieve pre-defined templates.
- * Add the Work Order Quick Action on the Case.
- * Add the Work Order Quick Action on the Account.
- * Use Work Types to achieve pre-defined templates.

NO.52 Universal Containers experienced an outage with their production Heroku Postgres database due to a fault with the underlying infrastructure. The database was unavailable for an hour. The database is on the Standard-0 plan.

Which two actions should an Architect recommend to mitigate such database failures and outages in the future? (Choose two.)

- * Create a follower database that uses the same plan as the leader.
- * Migrate the database to a Premium-tier plan.
- * Migrate the database to a larger Standard-tier plan.
- * Create a fork of the database that uses the same plan as the leader.

NO.53 Universal Containers provides 24/7 service support to its customers. However, their Field Service Technicians have specified working hours.

Which two items should the Consultant create? (Choose two.)

- * Create operating hours for the Service Resource.
- * Create operating hours for the Optimization Engine.
- * Create operating hours for the Service Appointment.
- * Create operating hours for the Service Territory.

NO.54 A client's application needs to run in a European country for data residence purposes.

What is a consideration in this scenario?

- * When a dyno is cycled, its replacement might run in a different region.
- * European regions are only available for applications running in Private Spaces.
- * Heroku Postgres backup snapshots and dataclips are always stored in the U.S.
- * There is no guarantee that a Heroku Postgres database will be created in the same region as the application that provisions it.

Explanation/Reference: <https://devcenter.heroku.com/articles/regions>

Authentic Heroku-Architecture-Designer Dumps With 100% Passing Rate Practice Tests Dumps:

<https://www.vceprep.com/Heroku-Architecture-Designer-latest-vce-prep.html>