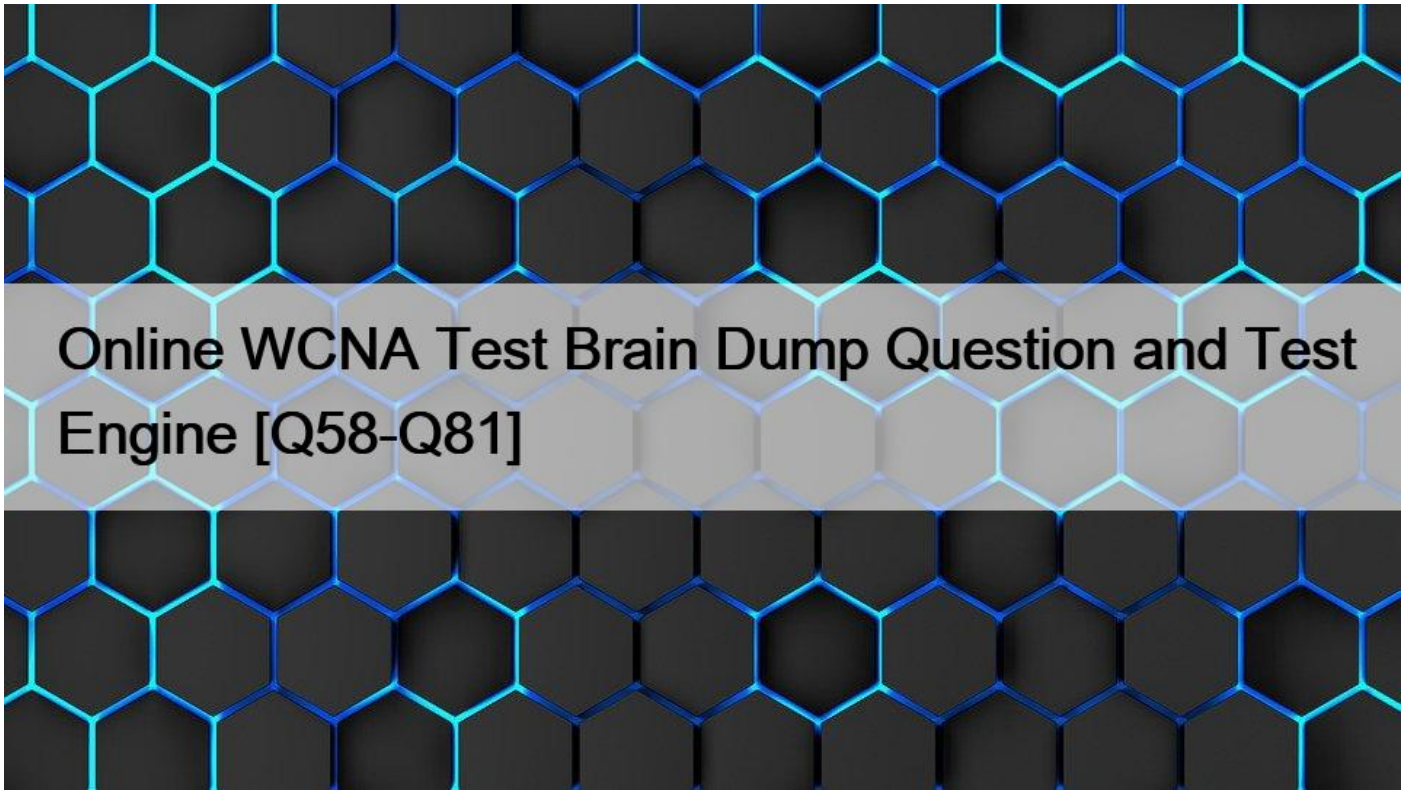


Online WCNA Test Brain Dump Question and Test Engine [Q58-Q81]



Online WCNA Test Brain Dump Question and Test Engine
Real Protocol Analysis WCNA Exam Dumps with Correct 102 Questions and Answers

NEW QUESTION 58

When you apply a display filter, the Status Bar indicates the total number of packets captured and the packets displayed.

- * True
- * False

NEW QUESTION 59

The gratuitous ARP process is not required if a host is configured with a static IP address.

- * True
- * False

NEW QUESTION 60

In the case of a high latency path, more than three identical ACKs may be sent before the retransmission is seen in a trace file.

- * True
- * False

NEW QUESTION 61

If a DHCP client does not receive an acknowledgment before the expiration of the rebinding time, the DHCP client must release its IP address and send a DHCP broadcast to locate a DHCP server or Relay Agent.

- * True
- * False

NEW QUESTION 62

Which display filter is used to display all DHCP traffic?

- * dhcp
- * bootp
- * tcp.port==68
- * udp.dst.port==67

NEW QUESTION 63

By default, Wireshark will only dissect port 443 traffic as SSL/TLS traffic. If you are using another port for SSL/TLS communications, you must add that port number in the HTTP preferences setting for SSL/TLS ports.

- * True
- * False

NEW QUESTION 64

Which transport is used for multicast and broadcast traffic?

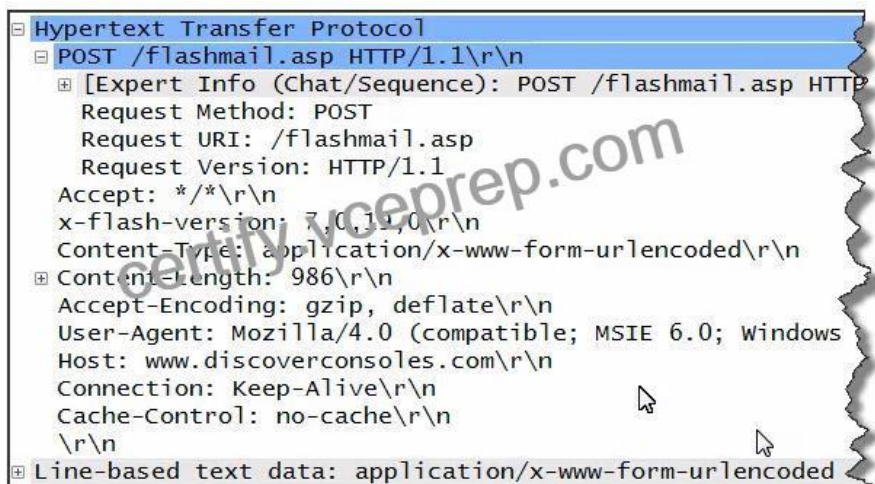
- * TCP
- * UDP
- * ICMP
- * ARP

NEW QUESTION 65

The value *REF* in the Time column indicates that a packet has been marked.

- * True
- * False

NEW QUESTION 66



This packet was sent from an HTTP client.

- * True
- * False

NEW QUESTION 67

How do you determine which Profile is in use while you are capturing traffic?

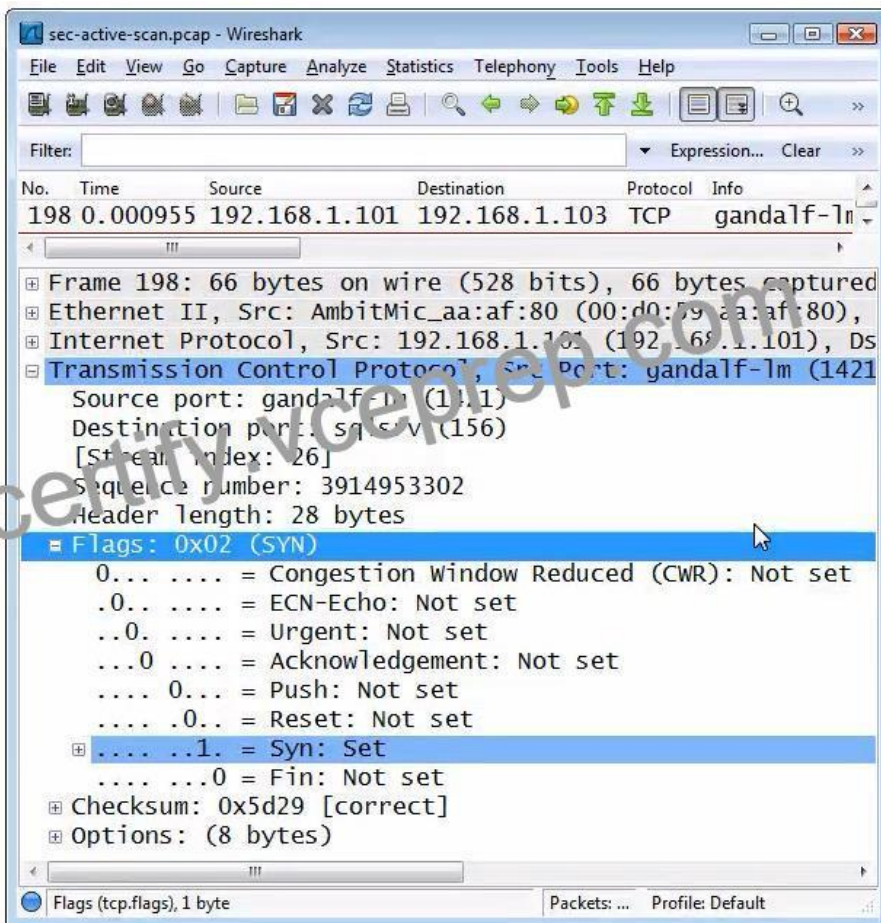
- * Examine the Wireshark Title Bar.
- * Lookin the Status Bar Profile column.
- * Right-click on the Packet Summary pane.
- * Open the Preferences | Interface information.

NEW QUESTION 68

Port resolution can use the TCP/IP stack services file to determine the correct destination port to use in the TCP or UDP header.

- * True
- * False

NEW QUESTION 69



This packet shows the expanded TCP flags area. The display filter `tcp.flags.syn==1 && tcp.flags.ack==1` and the display filter `tcp.flags=0xi2` provide identical filtering results.

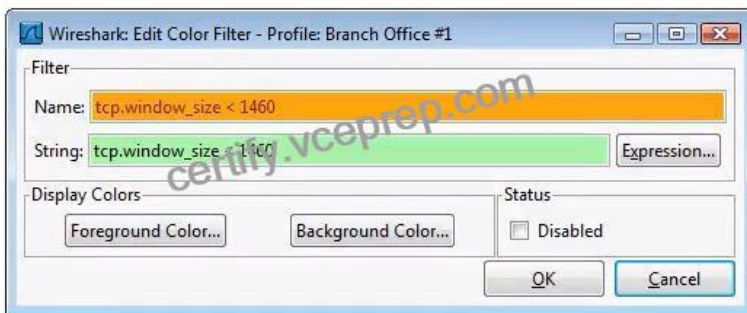
- * True
- * False

NEW QUESTION 70

You can use the display filter `ssl.record.content_type == 22` to view just the SSL/TLS handshake packets.

- * True
- * False

NEW QUESTION 71



Which statement about this color rule is correct?

- * This color rule will generate a syntax error.
- * This color rule will be saved in the Branch Office #1 profile.
- * This color rule must be placed under all other TCP color filters.
- * This color rule is based on the Berkeley Packet Filter (BPF) format.

NEW QUESTION 72

How do you quickly spot large gaps in time between packets in a trace file containing 6,000 packets?

- * Open and examine Wireshark's Expert Infos window.
- * Look for packets colorized based on Wireshark's default coloring rule for high delta times.
- * Set the Time column to Seconds Since Beginning of Capture and scroll through the trace file.
- * Set the Time column to Seconds Since Previously Displayed Packet and sort the Time column.

NEW QUESTION 73

What is the most efficient method for saving non-contiguous packets in a trace file?

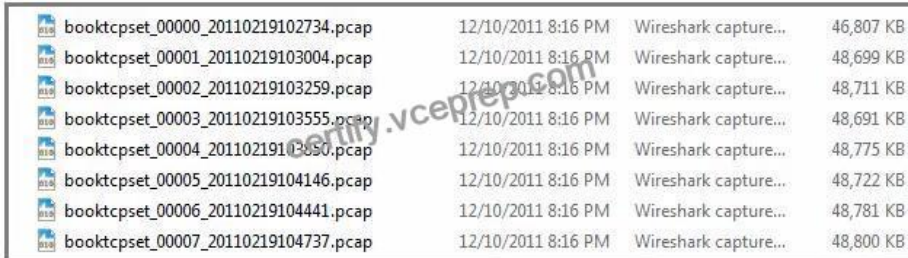
- * Mark the packets and choose to save the marked packets.
- * Apply a color filter for each packet and save all colored packets.
- * Right click and copy the packets individually to a new instance of Wireshark.
- * Open the packets in a new window and save them under the same file name.

NEW QUESTION 74

The coloring of packets that match the Bad TCP default coloring rule is permanent and cannot be edited.

- * True
- * False

NEW QUESTION 75



booktcpset_00000_20110219102734.pcap	12/10/2011 8:16 PM	Wireshark capture...	46,807 KB
booktcpset_00001_20110219103004.pcap	12/10/2011 8:16 PM	Wireshark capture...	48,699 KB
booktcpset_00002_20110219103259.pcap	12/10/2011 8:16 PM	Wireshark capture...	48,711 KB
booktcpset_00003_20110219103555.pcap	12/10/2011 8:16 PM	Wireshark capture...	48,691 KB
booktcpset_00004_20110219103850.pcap	12/10/2011 8:16 PM	Wireshark capture...	48,775 KB
booktcpset_00005_20110219104146.pcap	12/10/2011 8:16 PM	Wireshark capture...	48,722 KB
booktcpset_00006_20110219104441.pcap	12/10/2011 8:16 PM	Wireshark capture...	48,781 KB
booktcpset_00007_20110219104737.pcap	12/10/2011 8:16 PM	Wireshark capture...	48,800 KB

The image depicts eight files that are part of a file set.

- * True
- * False

NEW QUESTION 76

DNS can only resolve IP addresses to host names.

- * True
- * False

NEW QUESTION 77

Session Initiation Protocol (SIP) is a protocol that can be used to carry voice data.

- * True
- * False

NEW QUESTION 78

You may need to capture traffic at different points on the network to identify the location of packet loss.

- * True
- * False

NEW QUESTION 79

The TCP Time-Sequence graph can depict packet loss.

- * True
- * False

NEW QUESTION 80

Which statement about ICMP is true?

- * Port filtering can block ICMP traffic.
- * ICMP packets cannot cross a router.
- * All ICMP packets are the same length.

* ICMP packets do not contain a UDP or TCP header.

NEW QUESTION 81

You have opened a trace file that has been sent to you and you noticed the timestamp only offers millisecond-level time values. You can enable Wireshark to add themicrosecond detail information to these packets.

- * True
- * False

Valid WCNA Test Answers & Protocol Analysis WCNA Exam PDF: <https://www.vceprep.com/WCNA-latest-vce-prep.html>