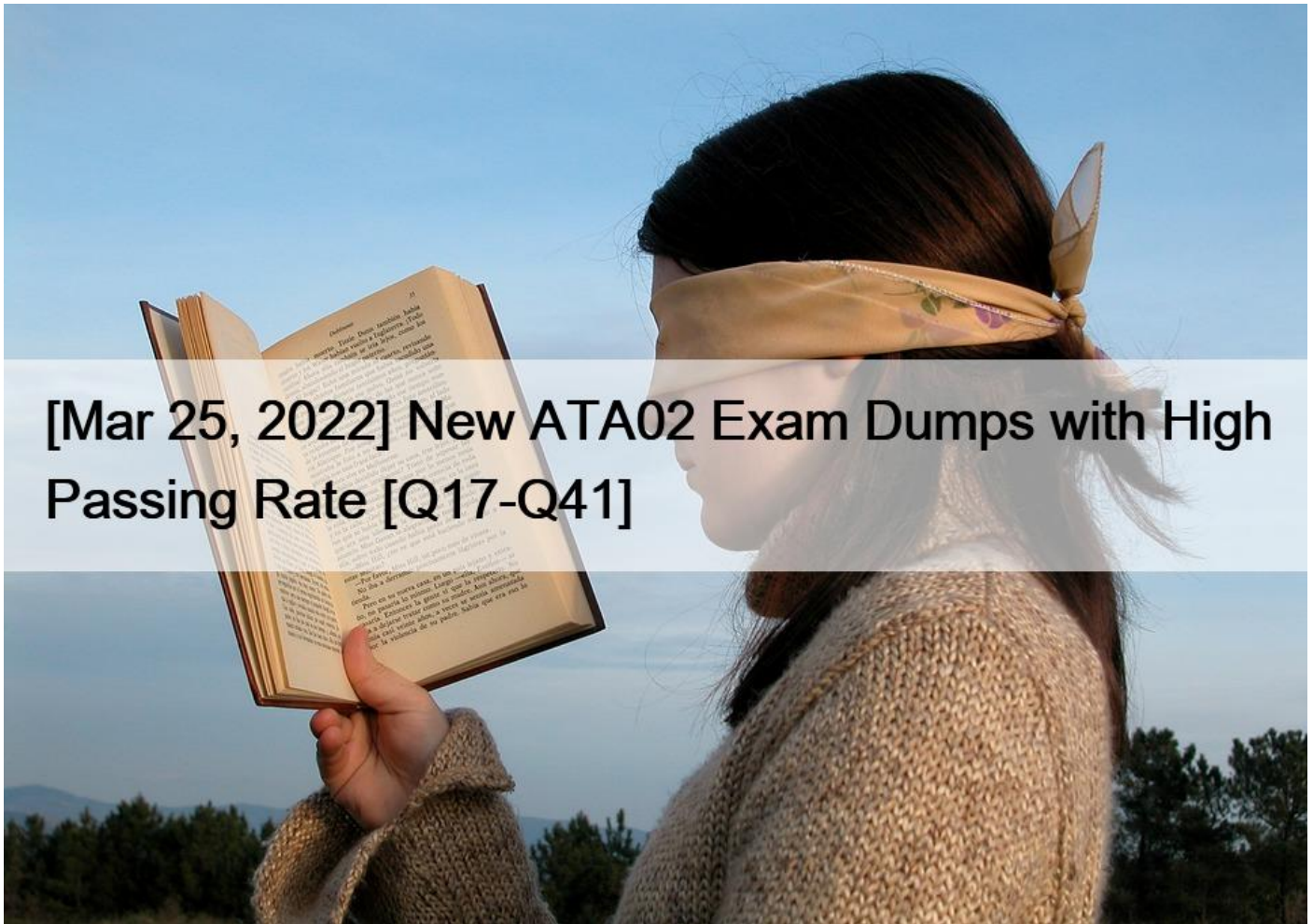


[Mar 25, 2022 New ATA02 Exam Dumps with High Passing Rate [Q17-Q41]



[Mar 25, 2022] New ATA02 Exam Dumps with High Passing Rate
Get ATA02 Brindumps & ATA02 Real Exam Questions

NO.17 What should be taken into account when considering the licensing of the Blue Prism environment? (Select 3)

- * Blue Prism is licensed, based on the number of connections to the database
- * The number of processes executing in the production environment(s) at the same time.
- * The license implications of the software that will be automated by Blue Prism
- * The licensing of the SQL Server environment
- * The Blue Prism license includes everything that will be required for a production environment

NO.18 By default what port does a Runtime Resource listen on? (Select 1)

- * 8181 – but it is configurable
- * 8199 – this is fixed and cannot be changed
- * 443
- * There is no default

NO.19 Which of the following is TRUE, when referring to connections configured using the “SOAP with Transport Encryption and Windows Authentication” mechanism? (Select 2)

- * Data is encrypted
- * Client and server can reside in separate Active Directory Network Infrastructures
- * Certificates are required
- * .NET remoting is used for Operating Communications
- * Data is only encrypted if you select the “Encryption=True” box in the configuration screen

NO.20 Which of the following statements is true, when considering the specifications of the Virtualized devices for the Blue Prism environment? (select 2)

- * Only the minimum specifications for the Blue Prism components are required
- * The Virtual CPU to Physical core ratio on the Virtual host may have an impact on performance
- * The resource requirements of the automated applications should also be considered
- * All runtime resources should have identical resource profiles
- * Virtual devices will perform exactly the same as physical devices with similar specifications
- * A type 2 hypervisor should be used for production grade environments

NO.21 What should be considered when configuring high availability and disaster recovery scenarios for the Blue Prism Application Servers? (select 2)

- * Blue Prism application natively provides fail over between multiple application servers for a Runtime Resource
- * Consider deploying multiple Application Servers for each environment
- * Consider the impact of maintenance schedules on the availability of the environment
- * Deploy multiple instances of an application server service on a single VM

NO.22 Which of the following is TRUE, when referring to establishing a connection between a V6 Application Server and Client? (select 2)

- * One of the WCF connection modes should be used. NET remoting is provided for legacy support purposes only
- * Either WCF or NET remoting may be selected It does not matter which is used
- * It is important to ensure that all Blue Prism clients are configured to use the same connection mode as the Blue Prism Server that they are expected to connect to
- * It is important to configure the Blue Prism certificate server prior to establishing a connection from a client

NO.23 What is the difference between a Runtime Resource and a Process? (Select 1)

- * There is no difference, the terms are synonymous
- * A Process represents a definition of the automation steps and logic; Runtime Resources execute the steps defined within a Process
- * A Process represents a definition of the automation steps and logic; and a Runtime Resource is an executable containing all of the logic within a single process.
- * A Runtime Resource represents a collection of Processes which is used as part of Release Management

NO.24 When is virtualization of a dedicated Interactive Client System most appropriate? (select 2)

- * Interactive Clients should never be virtualized
- * For Process Development – it helps to ensure the Interactive Client has the same configuration as the virtualized Runtime Resources
- * Where the developers are geographically separate to the Blue Prism environment
- * To ensure a high-latency connection between the Interactive Client and the Application Server
- * Whenever runtime resources are virtualized

NO.25 What restrictions should be considered if using XenDesktop for delivery of the Runtime Resources?

- * Login Agent must be used to initiate the login to the device vs the Citrix Client
- * Only version 5 of Blue Prism is supported with Xendesktop

- * Login Agent is only supported from version 76 of XenDesktop, due to restrictions on 3rd party credential provider support prior to this.
- * XenDesktop is not a supported platform for the Runtime Resource
- * Surface Automation will need to be used for all automations

NO.26 Which of the following are common reasons to deploy multiple Application Servers for a single environment?

(select 2)

- * Redundancy – e.g. to provide a level of continuity if one Application Server fails
- * To increase the overall security of the environment
- * The number of connected clients and runtime resources
- * The Application Server doubles up as a Web Server for a separate application

NO.27 Which components of the Blue Prism solution may be supported via Presentation / Session Virtualization Software (such as Microsoft RDSH session virtualization)? (select 1)

- * Runtime Resource
- * Interactive Client (for Monitoring and Control)
- * Interactive Client (for development)
- * Application Server
- * All of the above

NO.28 What factors should be considered when designing the Blue Prism Database Server Environment? (select 4)

- * Whether windows authentication or SQL Native authentication will be used for the Database Connection
- * Backup and log truncation should be reviewed according to business criticality
- * Database and Log backup
- * Ensuring that the application servers have full sysadmin rights to the database
- * Proximity of the database server to the Blue Prism Application server
- * Selection of the database platform, between SQL server and Oracle
- * Ensuring that the database server can be accessed from all Runtime Resources within the network

NO.29 Which of the following should be taken into account, when considering using a Virtual desktop for the Runtime Resource using Virtual Desktop Infrastructure (VDI) or Hosted Virtual Desktop (HVD) Software (such as Citrix XenDesktop or VMware Horizon View)? (Select 2)

- * When using a non-persistent Virtual Desktop, the image may be refreshed and this could be problematic if not carefully managed.
- * It may be necessary to use the Blue Prism login agent or another automatic login method, to instantiate the Virtual Desktop session.
- * The Runtime Resources should not be deployed on Virtual Desktop Infrastructure.
- * It is always appropriate to use the same technology and strategy as is used for the human operators in the client environment.

NO.30 What devices may a Runtime Resource receive INSTRUCTIONAL communications from? (Select 4)

- * Active Directory Domain Controllers
- * Blue Prism Interactive Clients
- * Blue Prism Application Server(s)
- * Other Blue Prism Runtime Resources
- * Third party systems accessing Blue Prism web services
- * Blue Prism Credential Manager

NO.31 What is a common way of supporting geographically disparate users of a Blue Prism environment?

(Controllers / Developers)? (select 1)

- * Provide a high performance MPLS connection between sites
- * Provide virtualized Interactive Clients within the same network as the Blue Prism environment
- * Provide fully replicated Blue Prism environments in each geographic region where users are based
- * Nominate a user in the central location who will receive releases from each remote user and apply them to the system

NO.32 Which of the following is TRUE, when referring to connections configured using the “SOAP with Transport Encryption and Windows Authentication” mechanism? (Select 2)

- * Data is encrypted
- * Client and server can reside in separate Active Directory Network Infrastructures
- * Certificates are required
- * .NET remoting is used for Operating Communications
- * Data is only encrypted if you select the “Encryption=True” box in the configuration screen

NO.33 What should be considered when configuring high availability and disaster recovery scenarios for the Blue Prism Application Servers? (Select 2)

- * Blue Prism application natively provides fail over between multiple application servers for a Runtime Resource.
- * Consider deploying multiple Application Servers for each environment.
- * Consider the impact of maintenance schedules on the availability of the environment.
- * Deploy multiple instances of an application server service on a single VM.

NO.34 Within a PRODUCTION environment, which of the following tasks would an Interactive Client be used for?

(select 4)

- * Developing automated processes
- * Configuring Application models
- * Creating packages using Release Manager
- * Importing packages using Release Manager
- * Assigning Processes to Runtime Resources
- * Managing Active Queues
- * Managing Schedules

NO.35 Within a PRODUCTION environment, which of the following tasks would an Interactive Client be used for?

(Select 4)

- * Developing automated processes
- * Configuring Application models
- * Creating packages using Release Manager
- * Importing packages using Release Manager
- * Assigning Processes to Runtime Resources
- * Managing Active Queues
- * Managing Schedules

NO.36 What are the benefits of enabling direct network access from a Runtime to an end user application, as opposed to connecting via a component such as Citrix or RDSH? (select 2)

- * Network latency is circumvented
- * There are more options for interacting directly with the applications which accelerates time required to build automations
- * Automations built using direct object level instrumentation are likely to be more robust
- * It is then possible to record an automation directly using the spying tools
- * This enables the use of Surface Automation, which is faster to develop

NO.37 Which of the following should be taken into account, when considering using a Virtual desktop for the Runtime Resource using Virtual Desktop Infrastructure (VDI) or Hosted Virtual Desktop (HVD) Software (such as Citrix XenDesktop or VMware Horizon View)? (Select 2)

- * When using a non-persistent Virtual Desktop, the image may be refreshed and this could be problematic if not carefully managed.
- * It may be necessary to use the Blue Prism login agent or another automatic login method, to instantiate the Virtual Desktop session.
- * The Runtime Resources should not be deployed on Virtual Desktop Infrastructure.
- * It is always appropriate to use the same technology and strategy as is used for the human operators in the client environment.

Explanation/Reference:

NO.38 What factors should be considered, when designing the virtualization strategy for a Blue Prism environment? (Select 1)

- * Existing Data Center and Virtualization strategies
- * Support of the components
- * Desktop and Application Virtualization Strategies
- * Availability
- * All of the above

NO.39 What are the benefits of enabling direct network access from a Runtime to an end user application, as opposed to connecting via a component such as Citrix or RDSH? (Select 2)

- * Network latency is circumvented
- * There are more options for interacting directly with the applications which accelerates time required to build automations
- * Automations built using direct object level instrumentation are likely to be more robust
- * It is then possible to record an automation directly using the spying tools
- * This enables the use of Surface Automation, which is faster to develop

NO.40 Where can the key used by the Credential Manager be stored? (select 1)

- * The key is always stored in the database
- * The key is always stored within the config file on the Application Server
- * The key can either be stored in the database, in the config file on the Application Server, or in a separate securable file on the Application Server
- * The key is hard-coded and stored securely within the Application. It is subjected to obfuscation to ensure its protection
- * The key can only be stored in the database or in the config file on the Application Server

NO.41 Which of the following methods would be a valid approach for capturing process execution errors? (Select 3)

- * Calling an external program to send SNMP traps
- * Logging to event log and collecting via an external tool
- * Selecting send to external monitoring tool; from the Blue Prism process designer
- * Generating emails from the process

The benefit in Obtaining the ATA02 Exam Certification - Candidates can show their skills and expertise in developing solutions based on Blue Prism technology- Proves their knowledge to work in Blue Prism development- Include a credential

to your resume and help you stand out of the crowd **ATA02 Dumps To Pass Blue Prism Exam in 24 Hours - VCEPrep:**
<https://www.vceprep.com/ATA02-latest-vce-prep.html>]